

PYRAMID OF PEACE AND LIGHT

" Piramide di Pace e di Luce "

☉ stelle
di Orione

proiettori orientati sulle pareti luminose.

alt. 136 mt.

Piramide di luce
dei raggi luminosi
in struttura opalina.

raggi luminosi

Pilone
centrale
telescopico

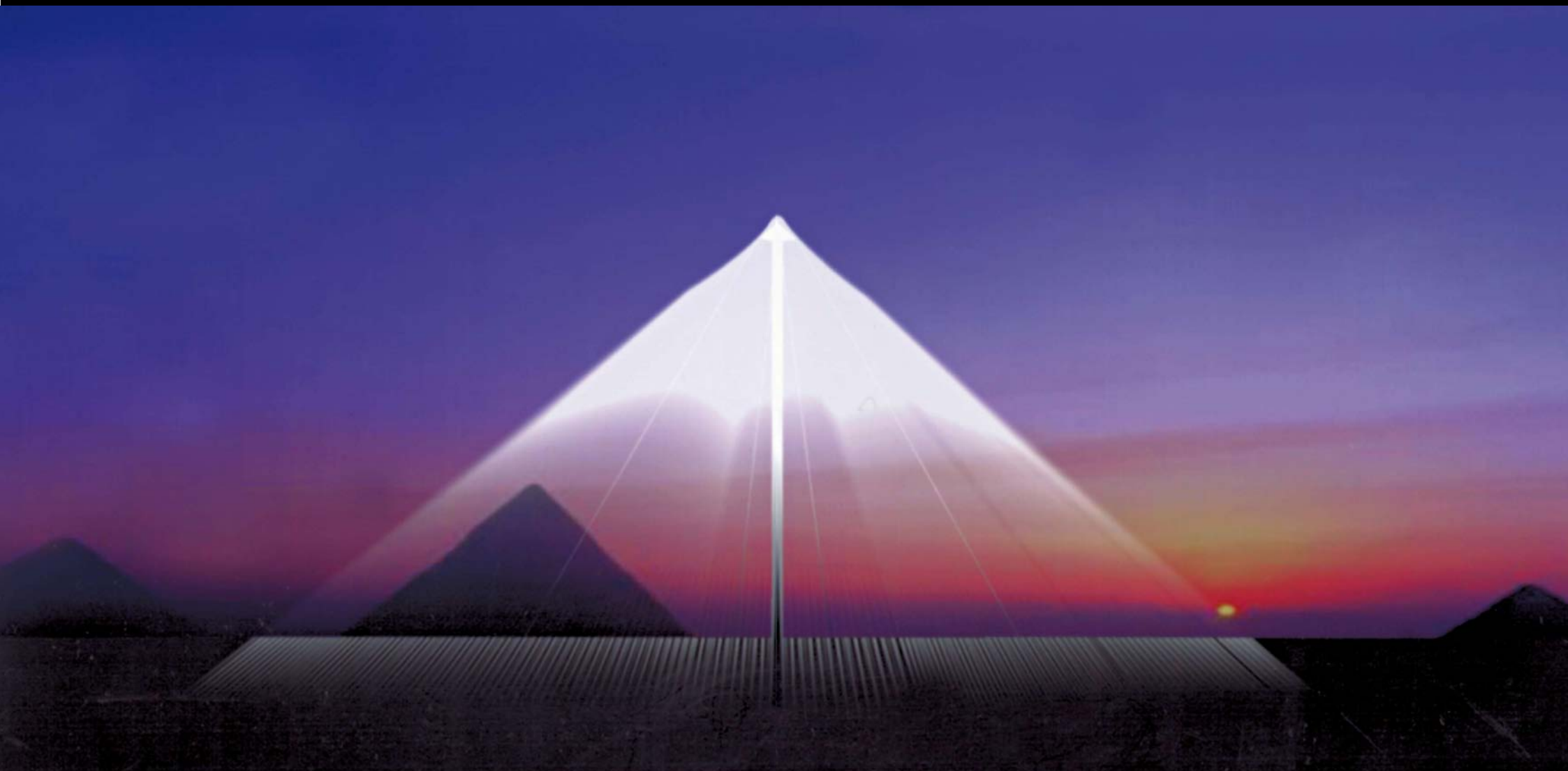
proiettori

lunghezza base 230 mt.

telescopio

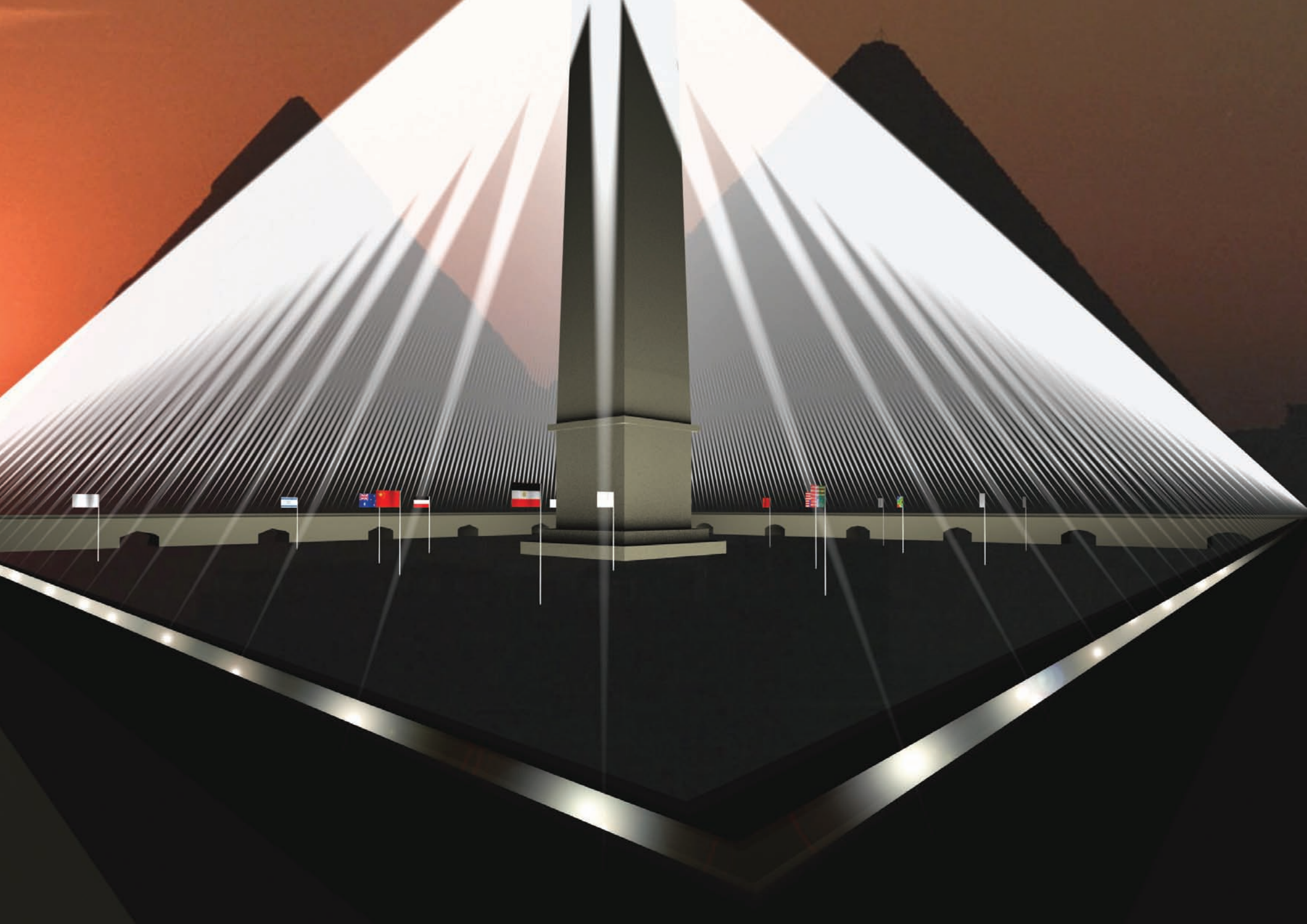
Ottavio Fabbri

BY OTTAVIO FABBRI



PYRAMID OF PEACE AND LIGHT

BY OTTAVIO FABBRI



EGYPT
THE GIZA PLATEAU
THE PYRAMIDS OF
CHEOPS
KHEPREN
MYKERINOS

CONSTELLATION OF ORION



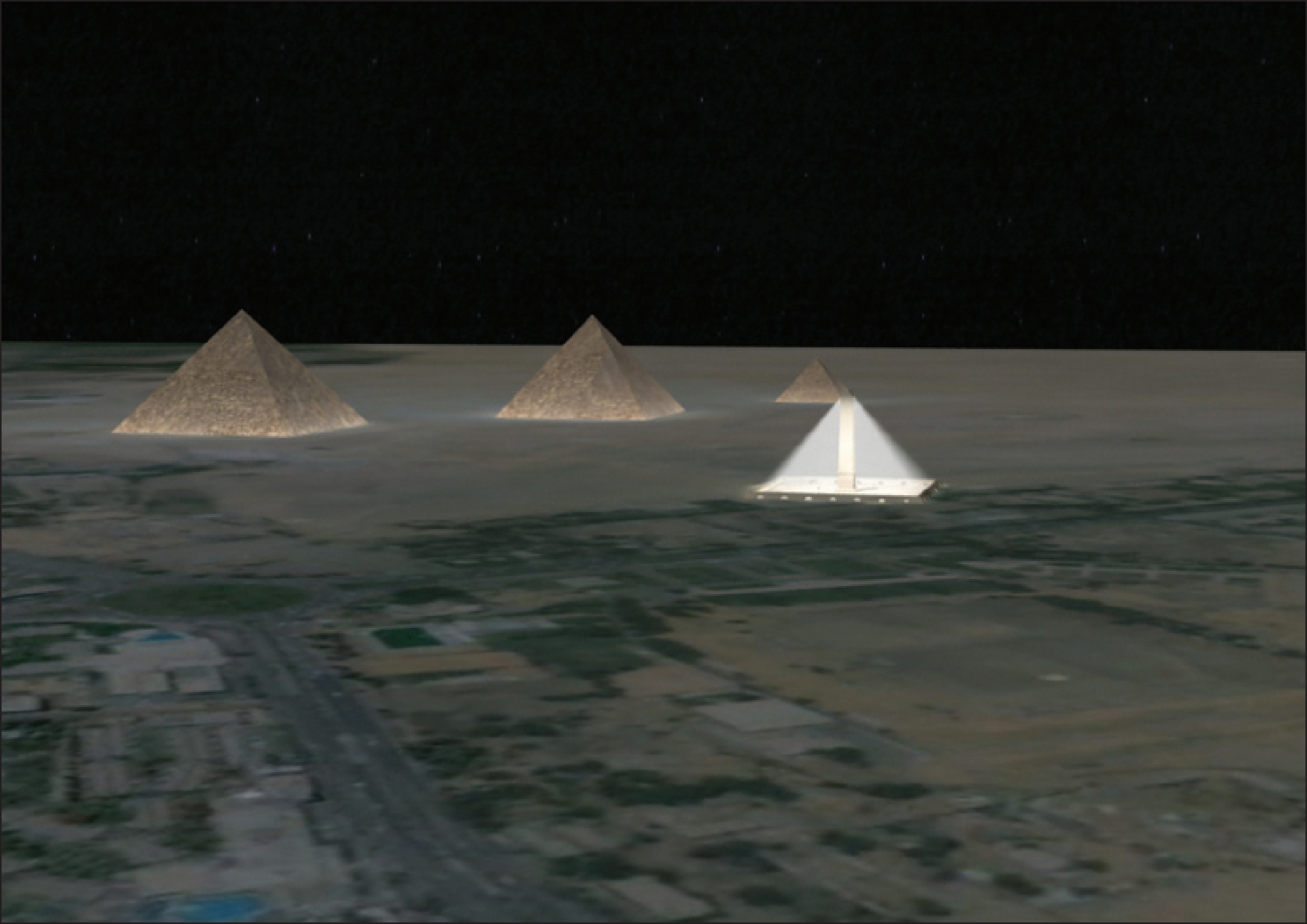
THESE SATELLITE IMAGES
SHOW THE ALIGNMENT
OF THE PYRAMIDS WITH THE
STARS THAT MAKE UP THE
CONSTELLATION OF ORION

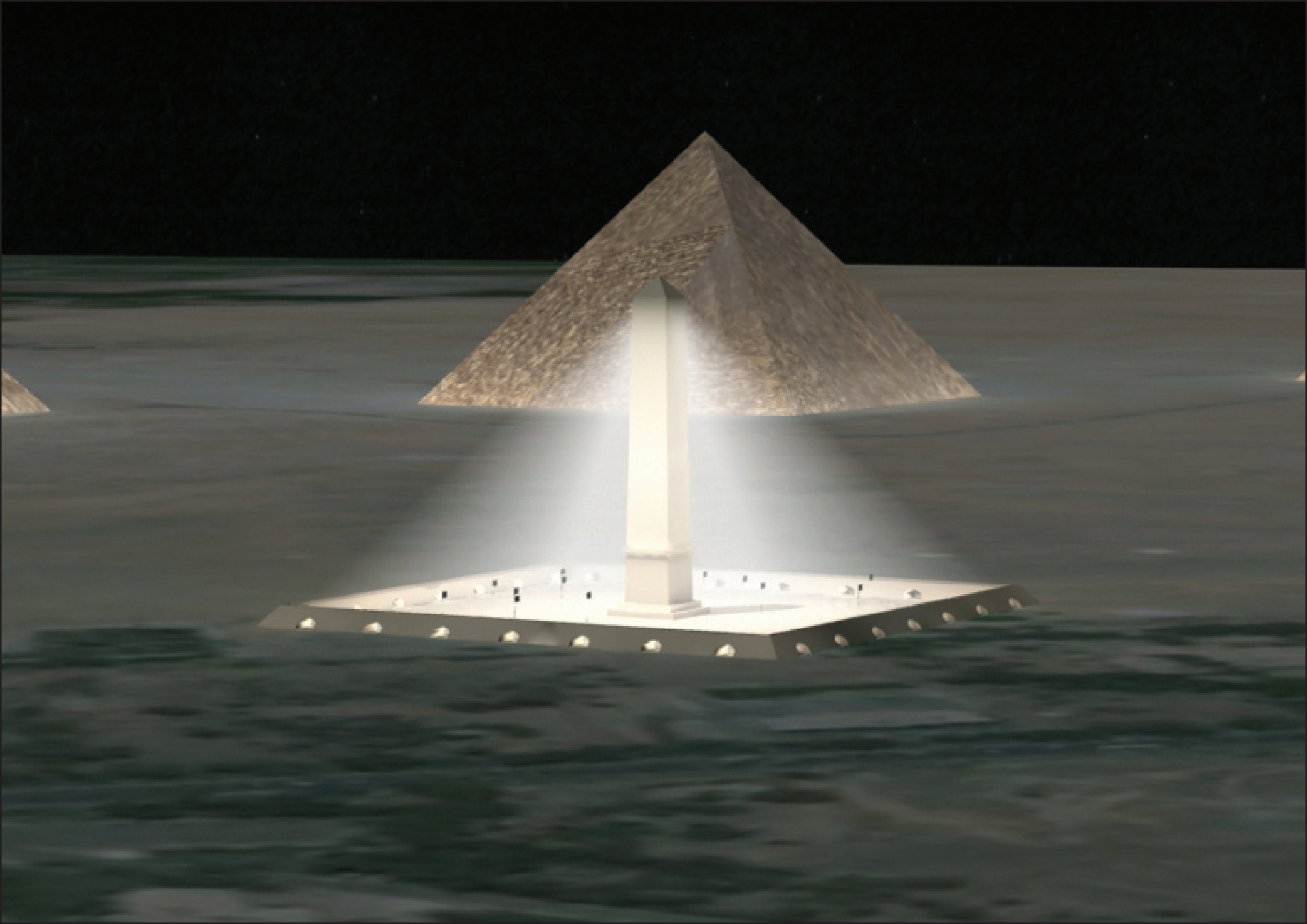


CHEOPS

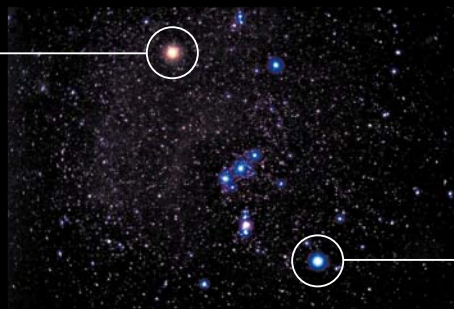
KHEPREN

MYKERINOS





RIGEL (1)



BELLATRIX (2)

(POSITION OF THE STARS OF REFERENCE)

THE "PYRAMID OF PEACE AND LIGHT" BY OTTAVIO FABBRI IS A CONTEMPORARY ART INSTALLATION AND AN ETHICAL MONUMENT DEDICATED TO THE GREAT EGYPTIAN CIVILISATION, TO ALL THE PEOPLE WHO WISH FOR PEACE ON EARTH AND TO FUTURE GENERATIONS.

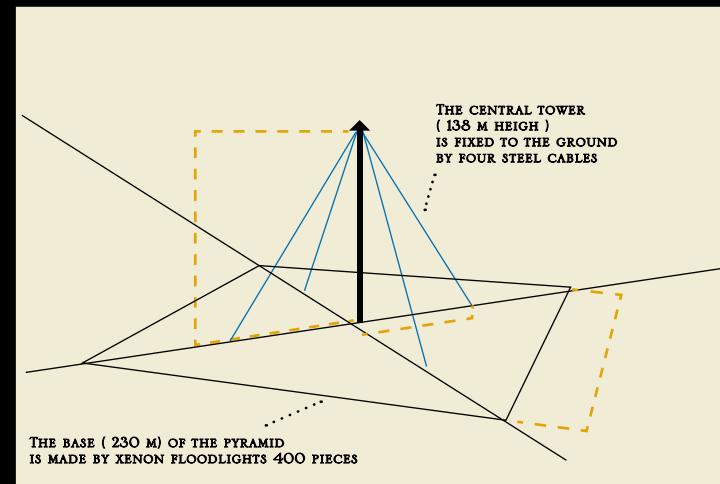
THERE ARE TWO POSSIBLE POSITIONS, CORRESPONDING TO THE TWO STARS FOUND AT THE EXTREMITIES OF THE CONSTELLATION.

(POSSIBLE POSITIONS)

RIGEL (1)



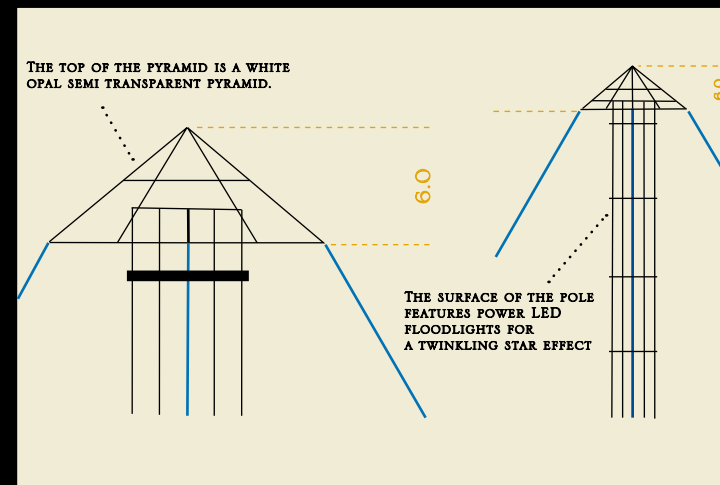
BELLATRIX (2)



THE CENTRAL TOWER (138 M HEIGH) IS FIXED TO THE GROUND BY FOUR STEEL CABLES

THE BASE (230 M) OF THE PYRAMID IS MADE BY XENON FLOODLIGHTS 400 PIECES

(TECHNICAL DETAILS)

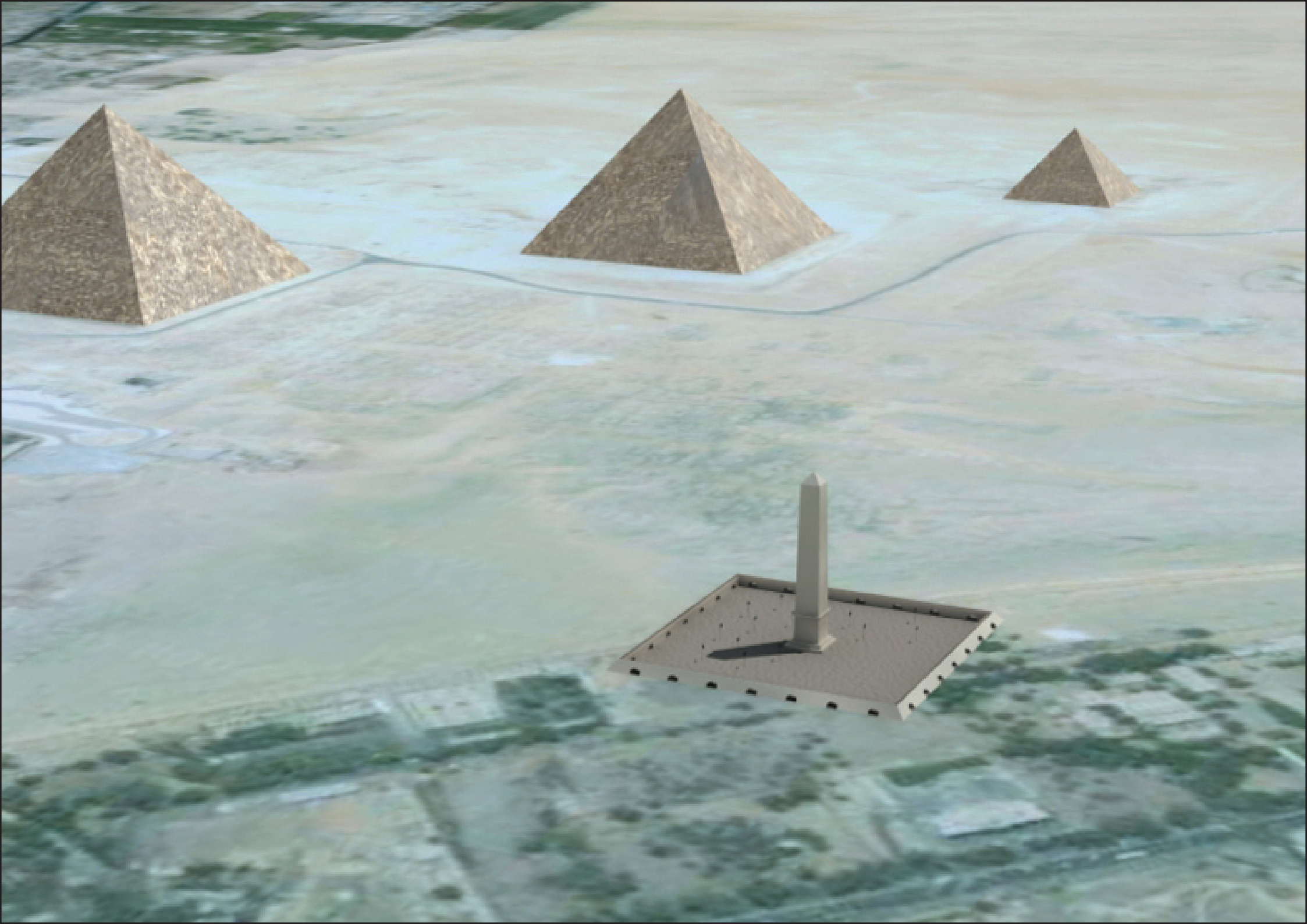


THE TOP OF THE PYRAMID IS A WHITE OPAL SEMI TRANSPARENT PYRAMID.

6.0

6.0

THE SURFACE OF THE POLE FEATURES POWER LED FLOODLIGHTS FOR A TWINKLING STAR EFFECT









WE ARE ALL MADE OF DUST,
BUT IT IS STARDUST...

OTTAVIO FABBRI

CONTACT

TEL. (+39) 02 454 98 921

FAX. (+39) 02 454 98 926

INFO@OTTAVIOFABBRI.COM

WWW.OTTAVIOFABBRI.COM